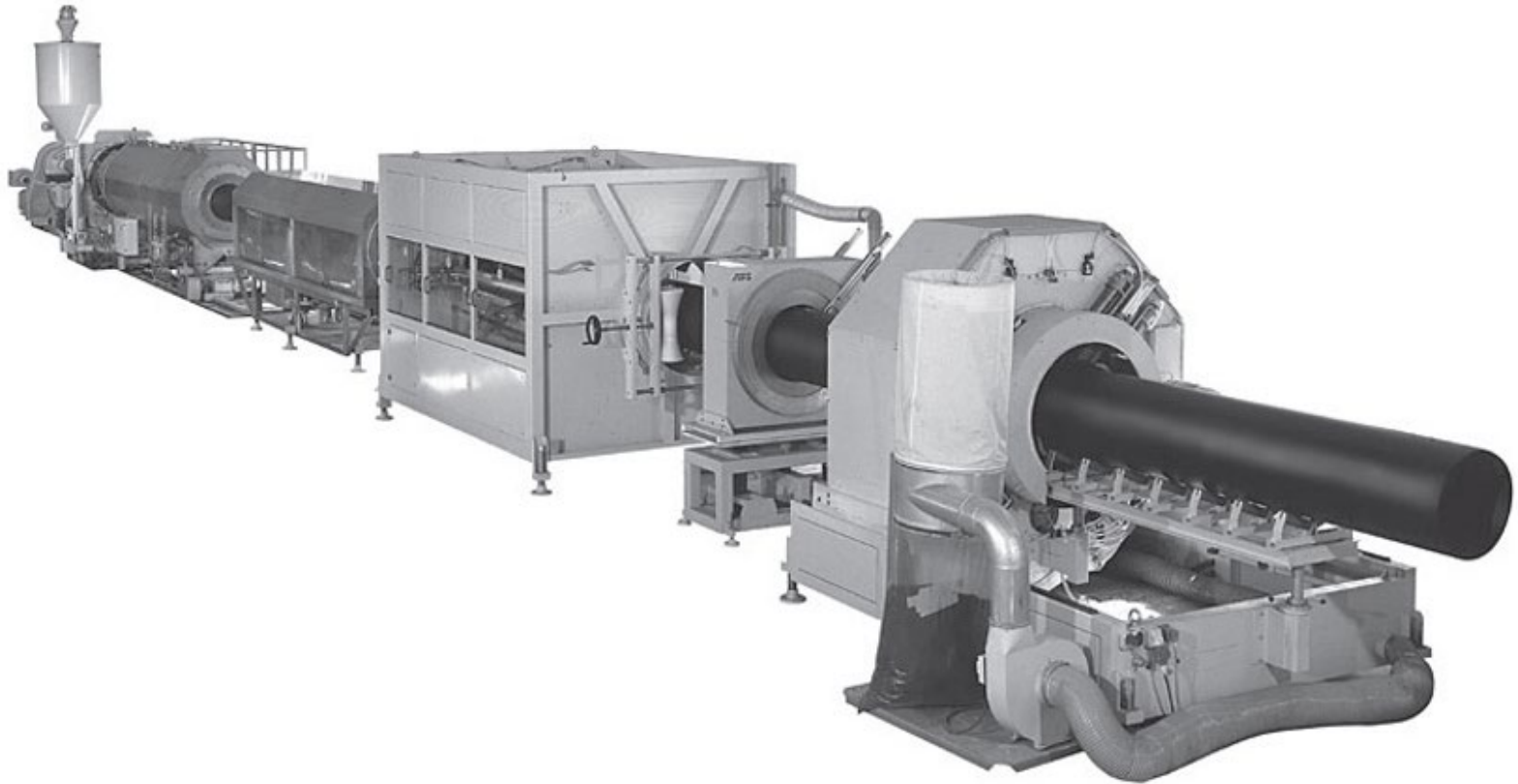


Pellets-to-Pipe Process

May 27, 2020



About WL Plastics Corporation

■ Background

- Founded in 2000 with a plant in Casper, WY
- Current facilities encompass 8 plants in 6 states
- Largest HDPE pressure pipe producer in North America
- Newest equipment & most experienced employees in the industry
- Capabilities for ½” to 54” diameter solid wall pipe



Project Overview

- Renovation of former GE facility to produce HDPE coil & stick pipe for use in:
 - Gas distribution
 - Municipal water & sewer lines
 - Oil & gas gathering and oilfield water & fluids
 - Conduit for buried fiber optics and utilities

- Ft. Edward site advantages:
 - Freight savings due to proximity to NE customers
 - Rail facilities exist to create bulk-car siding
 - Trained / available labor force in the area

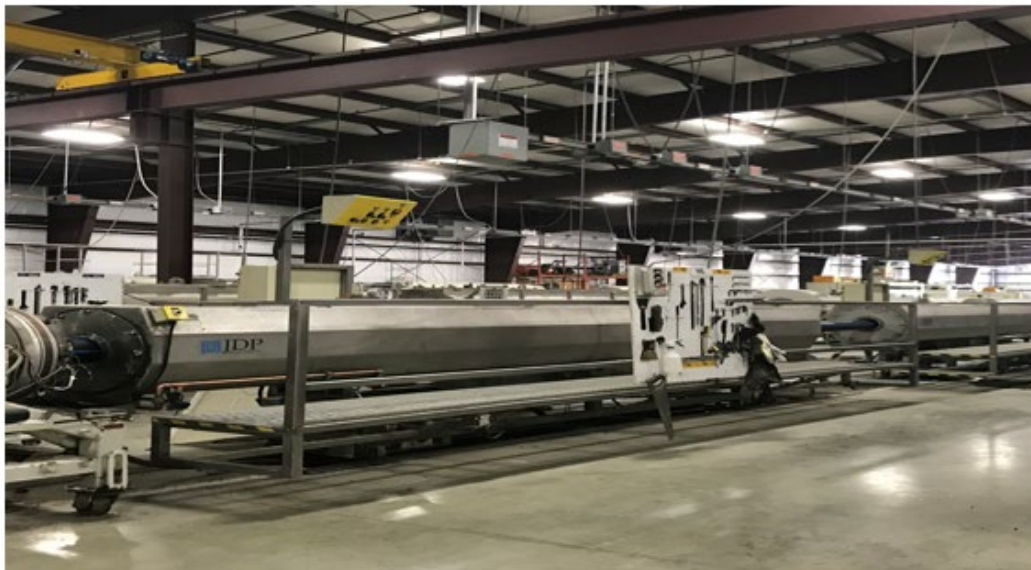
Material and Handling

- Raw materials to produce HDPE pipe consist of:
 - Resin pellets
 - Color concentrates
- Shipped in sealed railcar (~ 200,000lbs) and stored in external silos. Pellets are transferred from silos to production hoppers via overhead suction/feed system.



Extrusion

- Materials are transferred, blended and dried (referred to as the “compound”)
- Once blended to the appropriate approved formulation concentrations the compound is transferred to the extruder
- The extruder melts, blends or mixes & transfers the compound into the die (solid → molten state)



Cooling & Vacuum Sizing

- Pipe is formed in sizing sleeve & held under vacuum until profile is cooled enough to retain its shape.
- Cooling is achieved by spraying water over pipe in tanks via a closed-loop water recovery system.



Pipe Cutting & Finishing

- The pipe haul-off unit pushes the pipe through to the finishing tables or reels.
- The saw (typically orbital) cuts the pipe into the appropriate lengths
- HDPE Pipe can be coiled, reeled and bundled into sticks (typical lengths 50ft)



Pipe Storage & Shipping

- Completed pipe (sticks and/or reels) are stored in our facility yard until loaded onto flatbed trucks for shipment to the customer.

